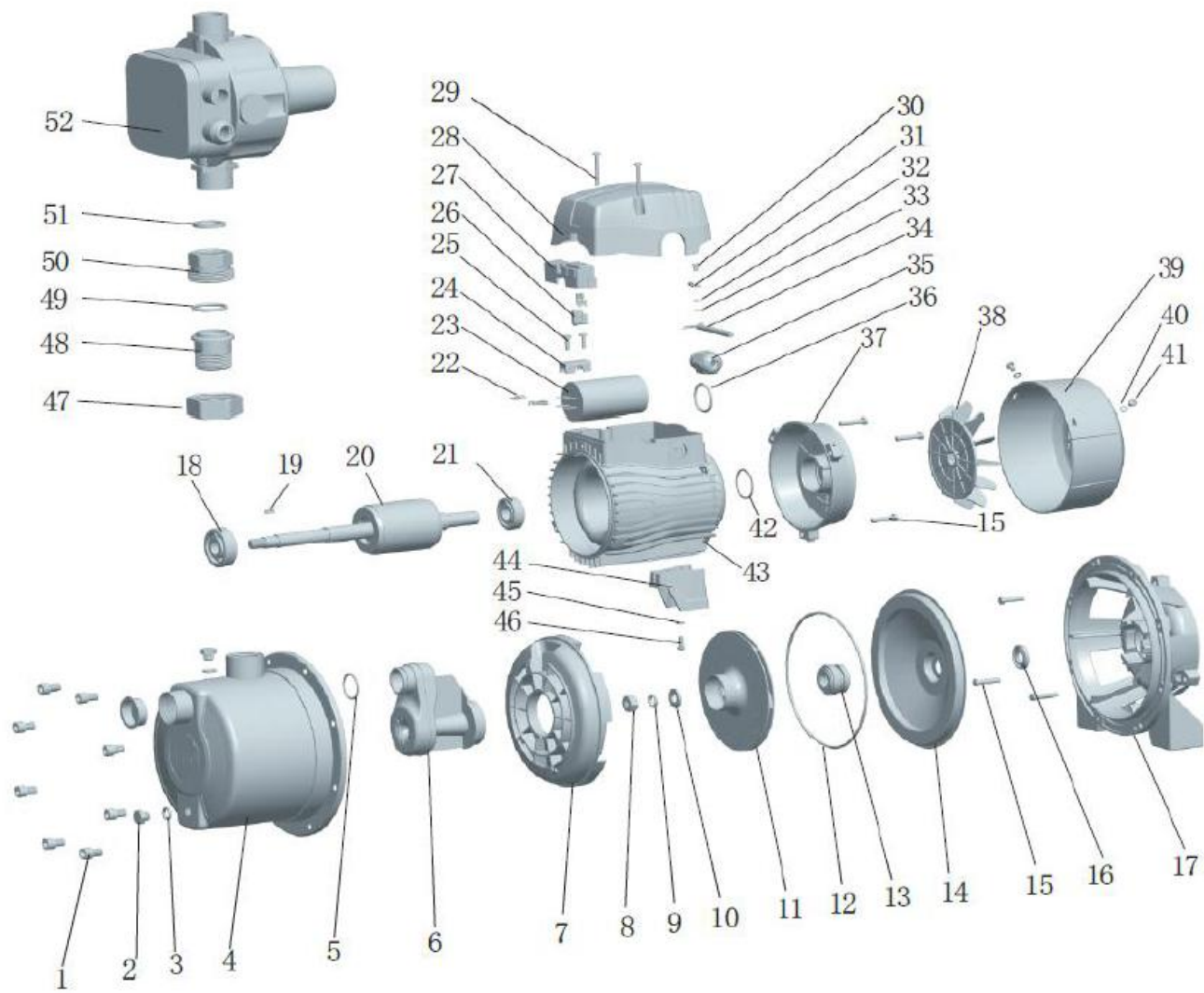


PARTS DRAWING FOR BIA-INOX60S2M



802801 BIA-INOX60S2M							802801 BIA-INOX60S2M						
Item	Quant.	Pronto	Item No.	Description	In Contact with Water	Material	Item	Quant.	Pronto	Item No.	Description	In Contact with Water	Material
1	8		804065	BIA-INOX60S2-1		SS 201	27	1		804039	BIA-INOX60S2-27		PC
2	2		804064	BIA-INOX60S2-2		BRASS	28	1		804038	BIA-INOX60S2-28		PC/ABS
3	2		804063	BIA-INOX60S2-3	YES	NBR	29	4		804037	BIA-INOX60S2-29		SS 304
4	1		804062	BIA-INOX60S2-4		SS 304	30	1		804036	BIA-INOX60S2-30		SS 304
5	1		804061	BIA-INOX60S2-5		NBR	31	1		804035	BIA-INOX60S2-31		
6	1		804060	BIA-INOX60S2-6	YES	PPQ-GF30	32	1		804034	BIA-INOX60S2-32		65MN STEEL
7	1		804059	BIA-INOX60S2-7	YES	PPQ-GF30	33	1		804033	BIA-INOX60S2-33		Q235
8	1		804058	BIA-INOX60S2-8	YES	SS 304	34	1		804032	BIA-INOX60S2-34		NEOPRENE
9	1		804057	BIA-INOX60S2-9	YES	SS 304	35	1		804031	BIA-INOX60S2-35		
10	1		804056	BIA-INOX60S2-10	YES	SS 304	36	1		804030	BIA-INOX60S2-36		NBR
11	1		804055	BIA-INOX60S2-11	YES	SS 304	37	1		804029	BIA-INOX60S2-37		ZL102
12	1		804054	BIA-INOX60S2-12	YES	NBR	38	1		804028	BIA-INOX60S2-38		PP-GF10
13	1		804053	BIA-INOX60S2-13	YES	CARBON/CERAMIC/SS 304/NBR	39	1		804027	BIA-INOX60S2-39		PP-GF10
14	1		804052	BIA-INOX60S2-14	YES	SS 304	40	1		804026	BIA-INOX60S2-40		SS 304
15	3		804051	BIA-INOX60S2-15		STEEL	41	3		804025	BIA-INOX60S2-41		SS 201
16	1		804050	BIA-INOX60S2-16		NBR	42	3		804024	BIA-INOX60S2-42		65MN STEEL
17	1		804049	BIA-INOX60S2-17		ALUMINIUM	43	1		804023	BIA-INOX60S2-43		
18	1		804048	BIA-INOX60S2-18			44	1		804022	BIA-INOX60S2-44		PA6 GF25
19	1		804047	BIA-INOX60S2-19	YES	SS 304	45	1		804021	BIA-INOX60S2-45		C35
20	1		804046	BIA-INOX60S2-20	YES	SS 304	46	1		804020	BIA-INOX60S2-46		C35
21	1		804045	BIA-INOX60S2-21			47	1			WHI-UNIONMPCXSS	YES	SS 304
22	1		804044	BIA-INOX60S2-22		H62	48	1			WHI-UNIONMPCXSS	YES	SS 304
23	1		804043	BIA-INOX60S2-23			49	1			WHI-UNIONMPCXSS	YES	SS 304
24	1		804042	BIA-INOX60S2-24		PC+ABS	50	1			WHI-UNIONMPCXSS	YES	SS 304
25	1		804041	BIA-INOX60S2-25		SS 304	51	1			WHI-UNIONMPCXSS	YES	SS 304
26	1		804040	BIA-INOX60S2-26			52	1	711942		WHI-SK20PPHS2	YES	APPROVED